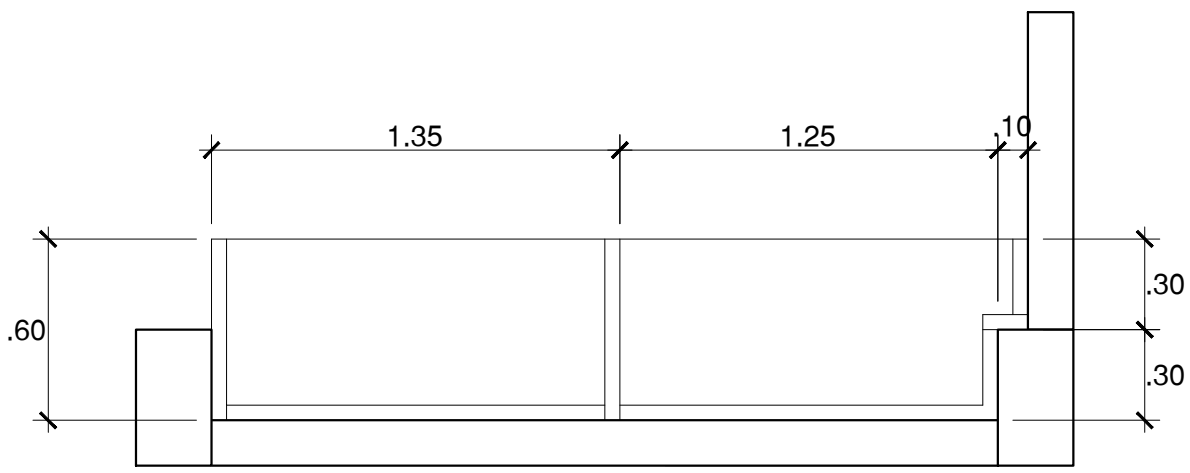
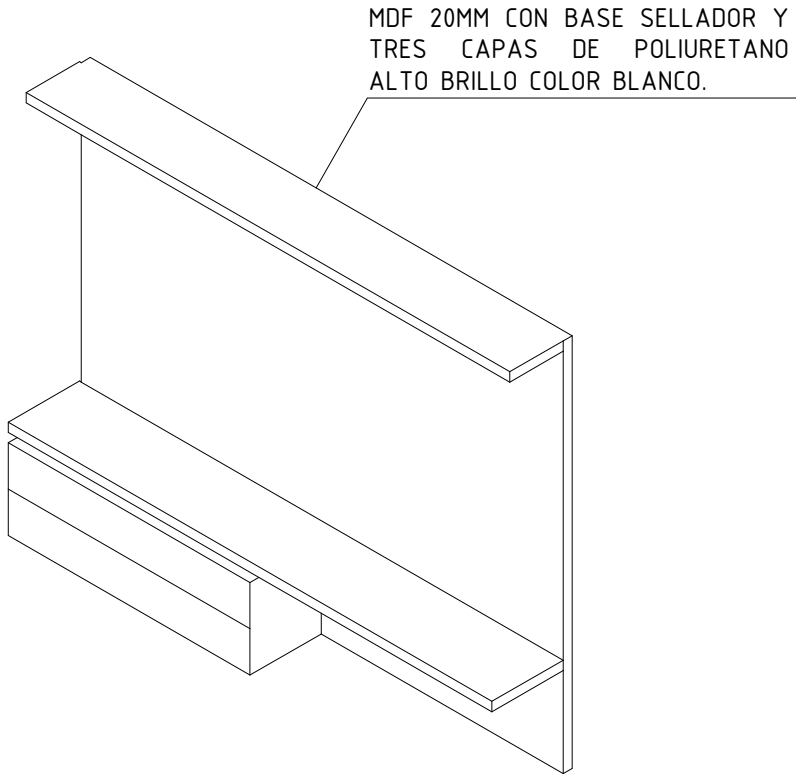
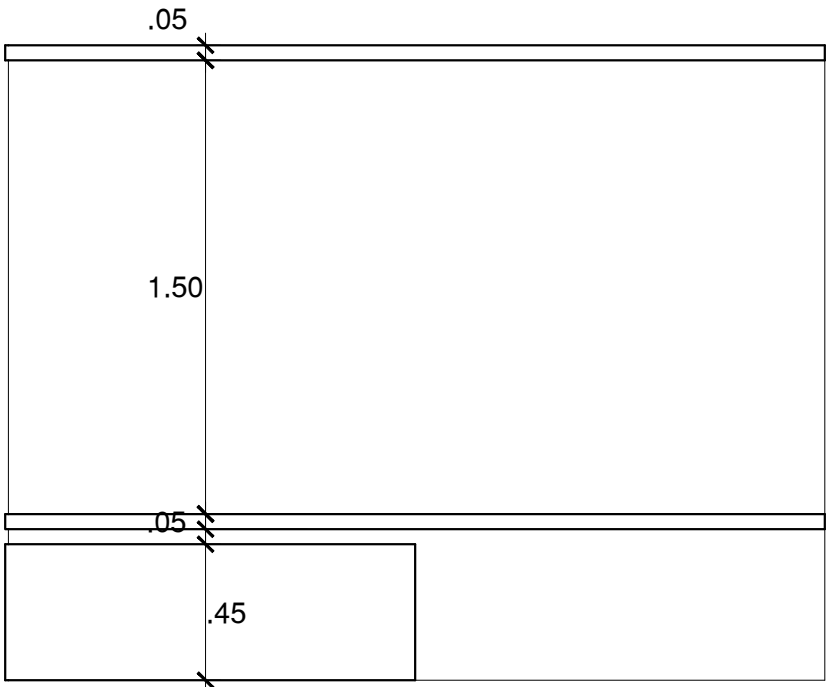


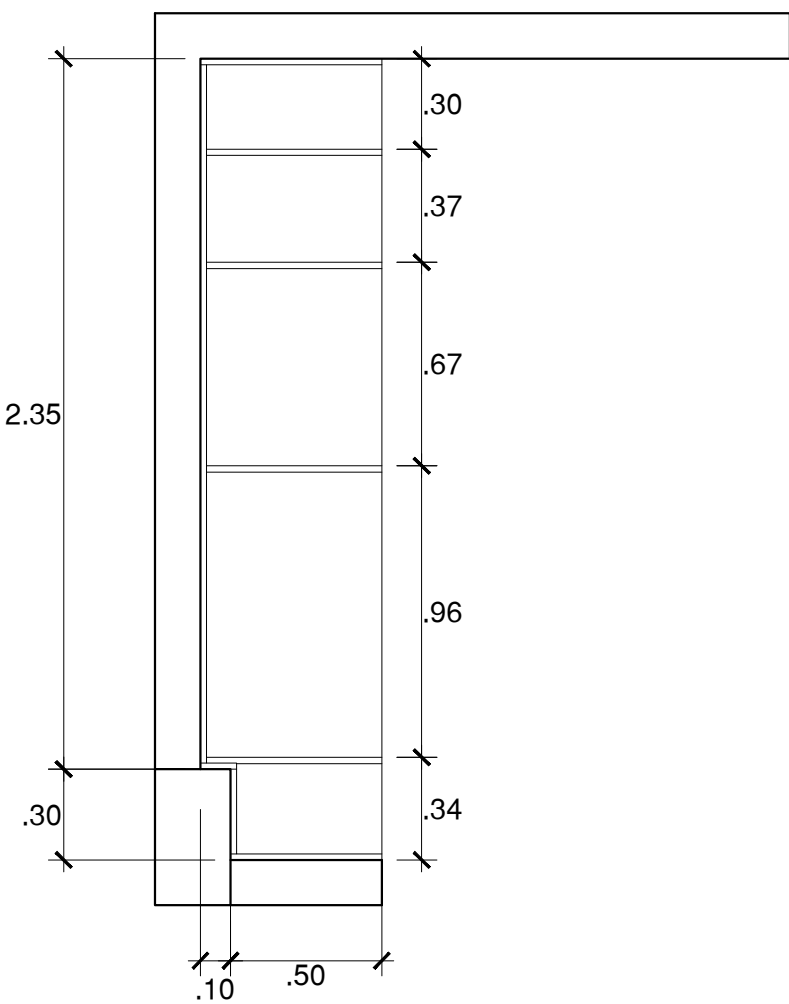
PLANTA C05



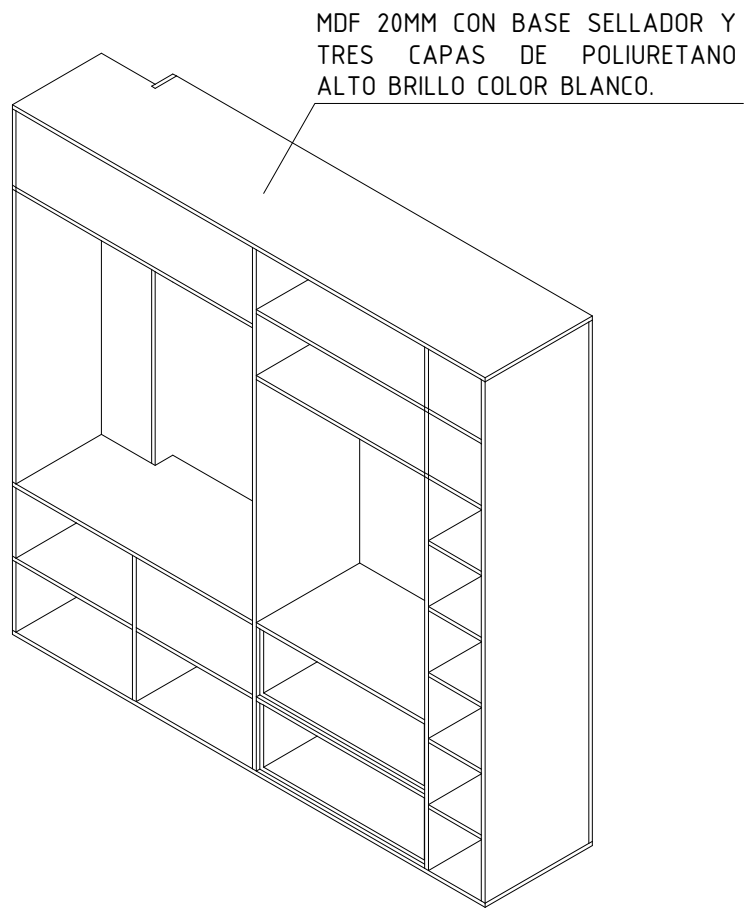
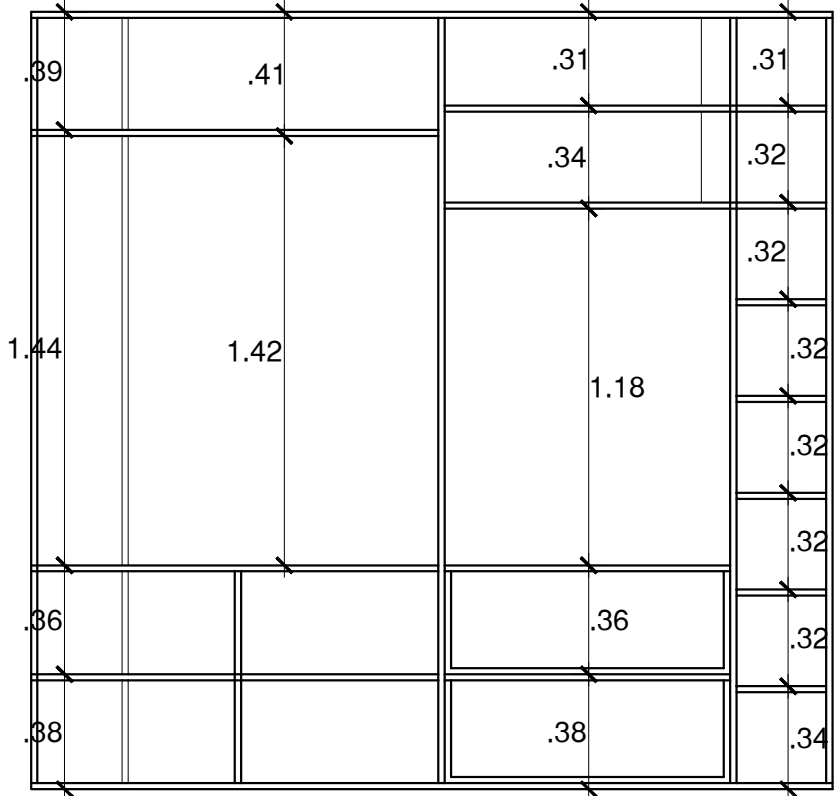
CORTE C05



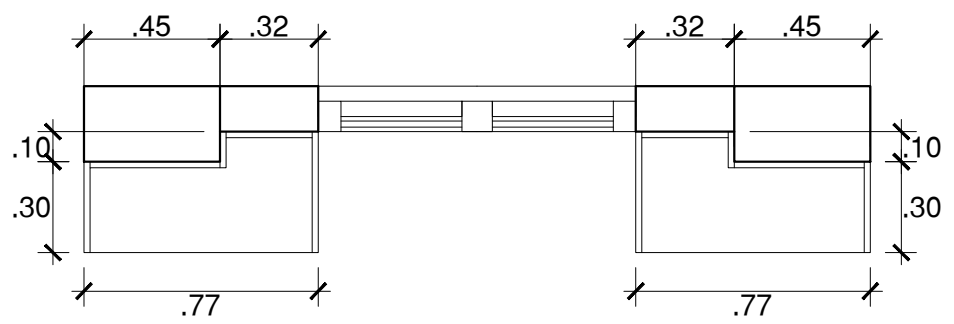
PLANTA C06



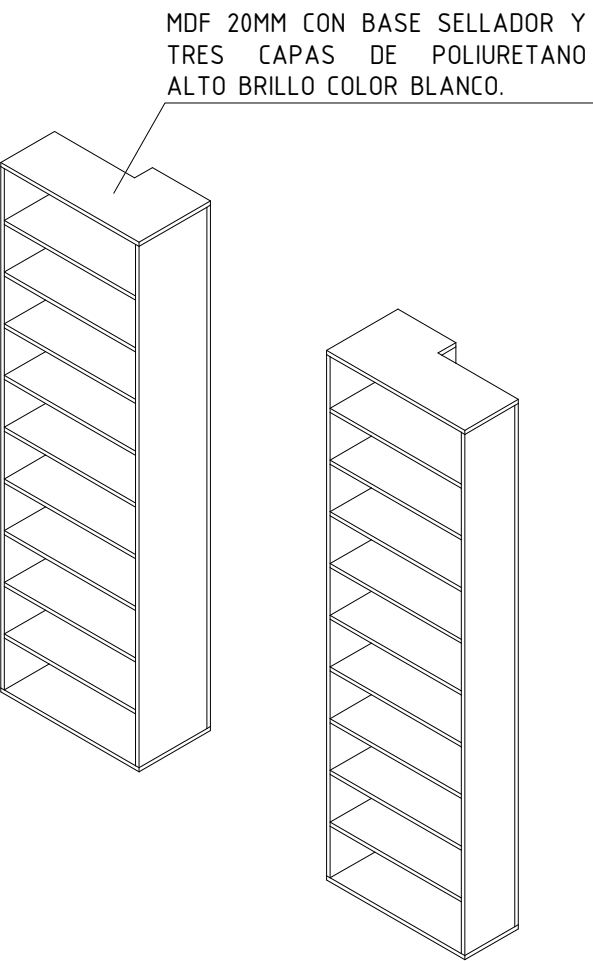
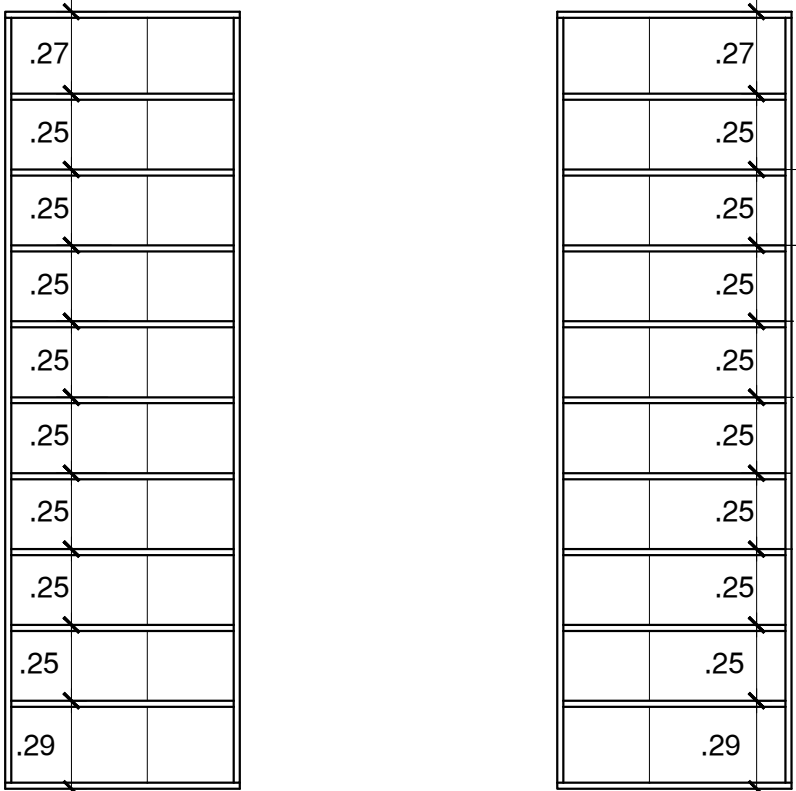
CORTE C06



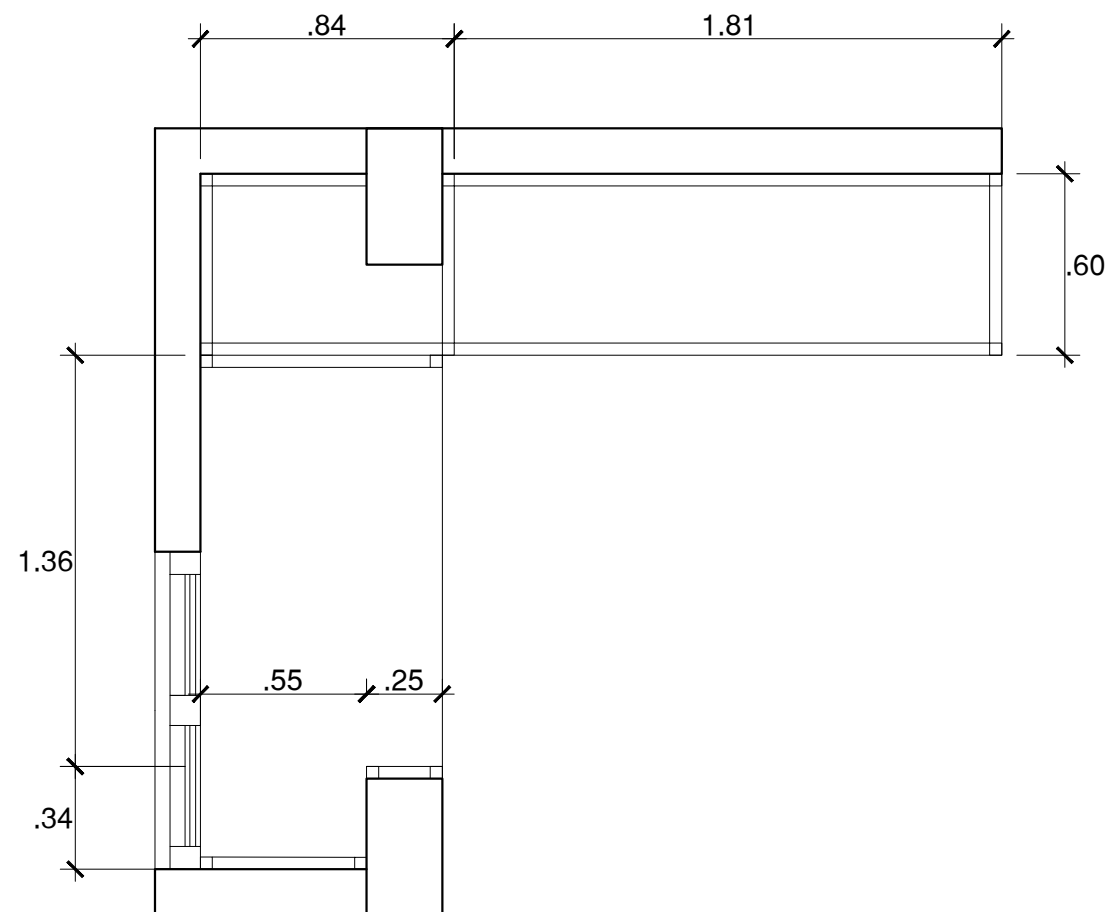
PLANTA C07



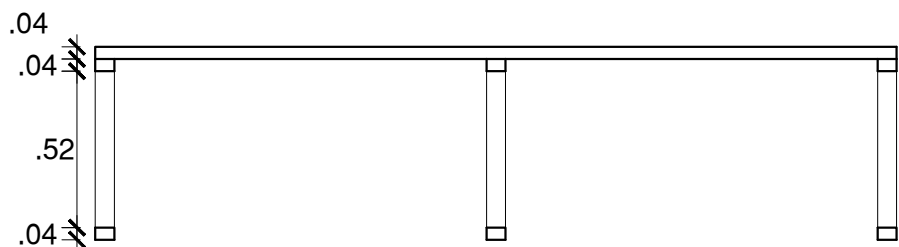
CORTE C07



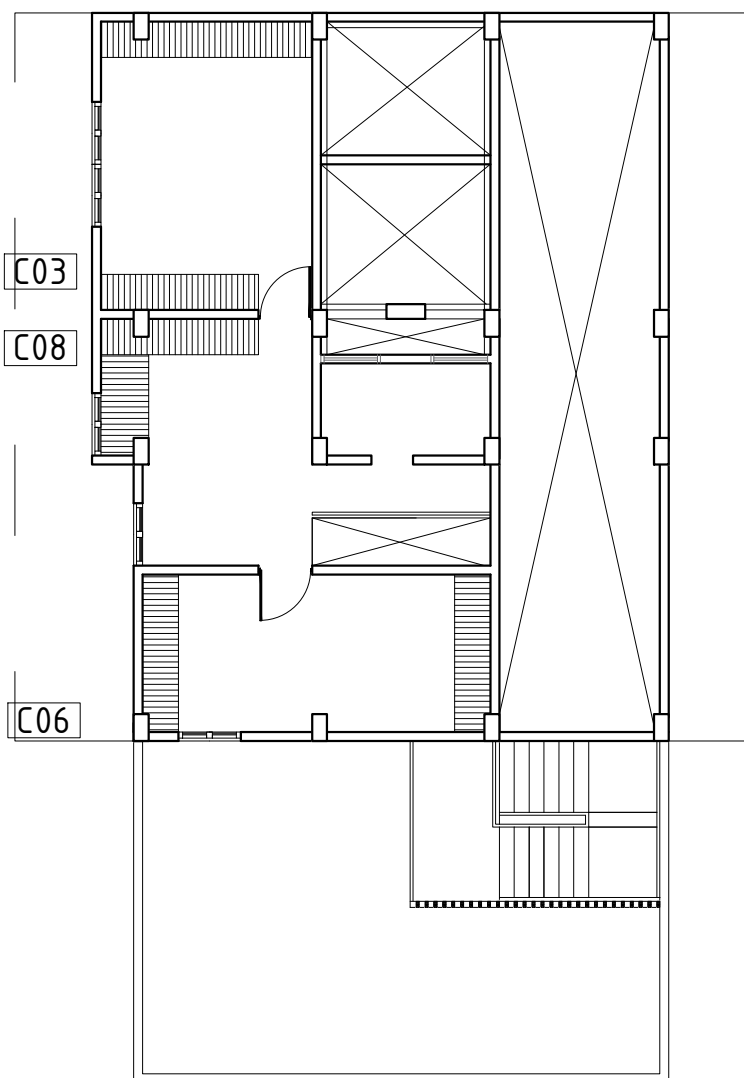
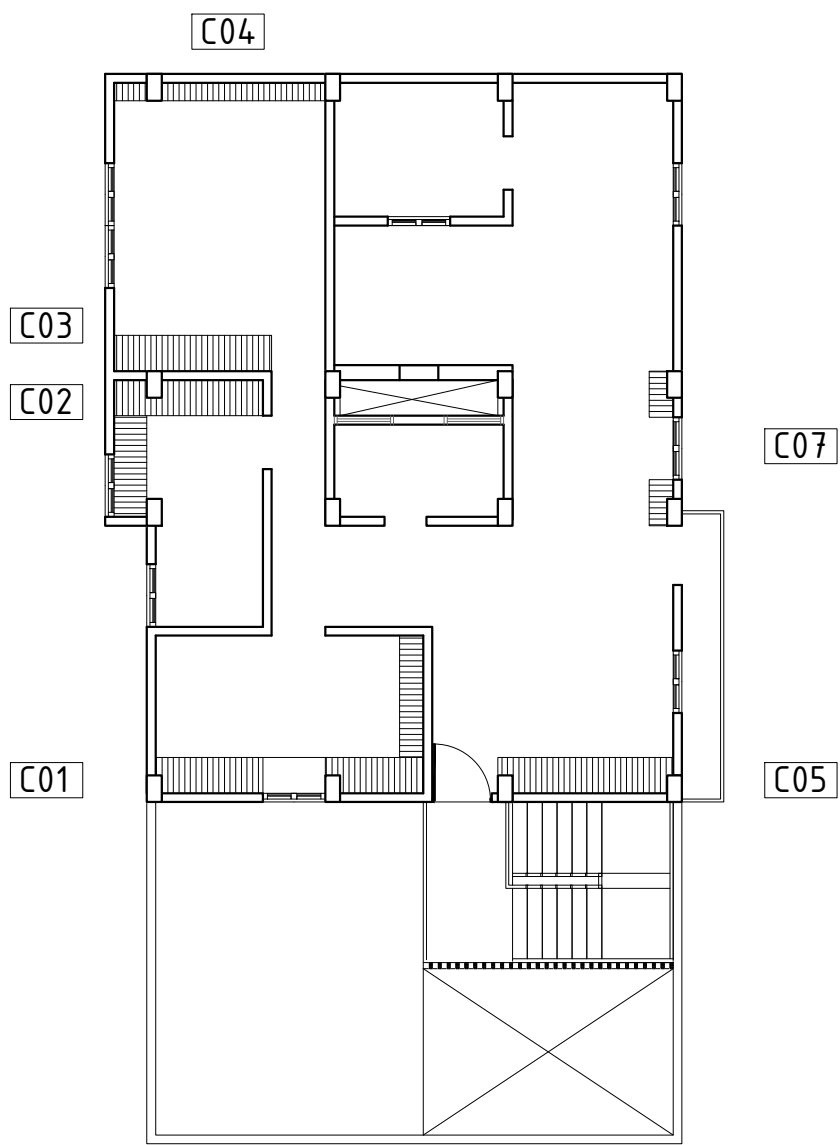
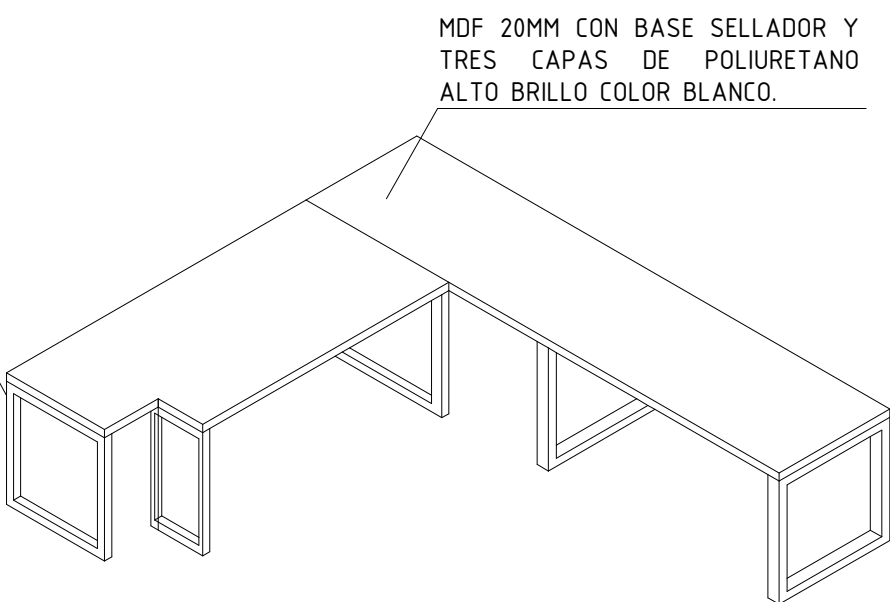
PLANTA C08



CORTE C08



ESTRUCTURA METALICA
50MM COLOR NEGRO MATE



PROYECTO:
VIVIENDAS PRODUCTIVAS
Y PROCESADORA DE TRUCHA
HUARÁZ

ALUMNA:
VELÁSQUEZ LÓPEZ MARGARITA T.

DESCRIPCION:
**DETALLE DE MUEBLES
VIVIENDA TIPO A**

ESCALA: 1/25 FECHA: JULIO 2021

PROFESIONAL RESPONSABLE:
ARQ. JORGE COSMÓPOLIS BULLÓN
ING. TOMÁS CARRASCO ORELLANO
ING. LUIS ALBERTO RAMOS MARTINEZ
ING. JOSE CARLOS YAFAC RISCO

LAMINA: